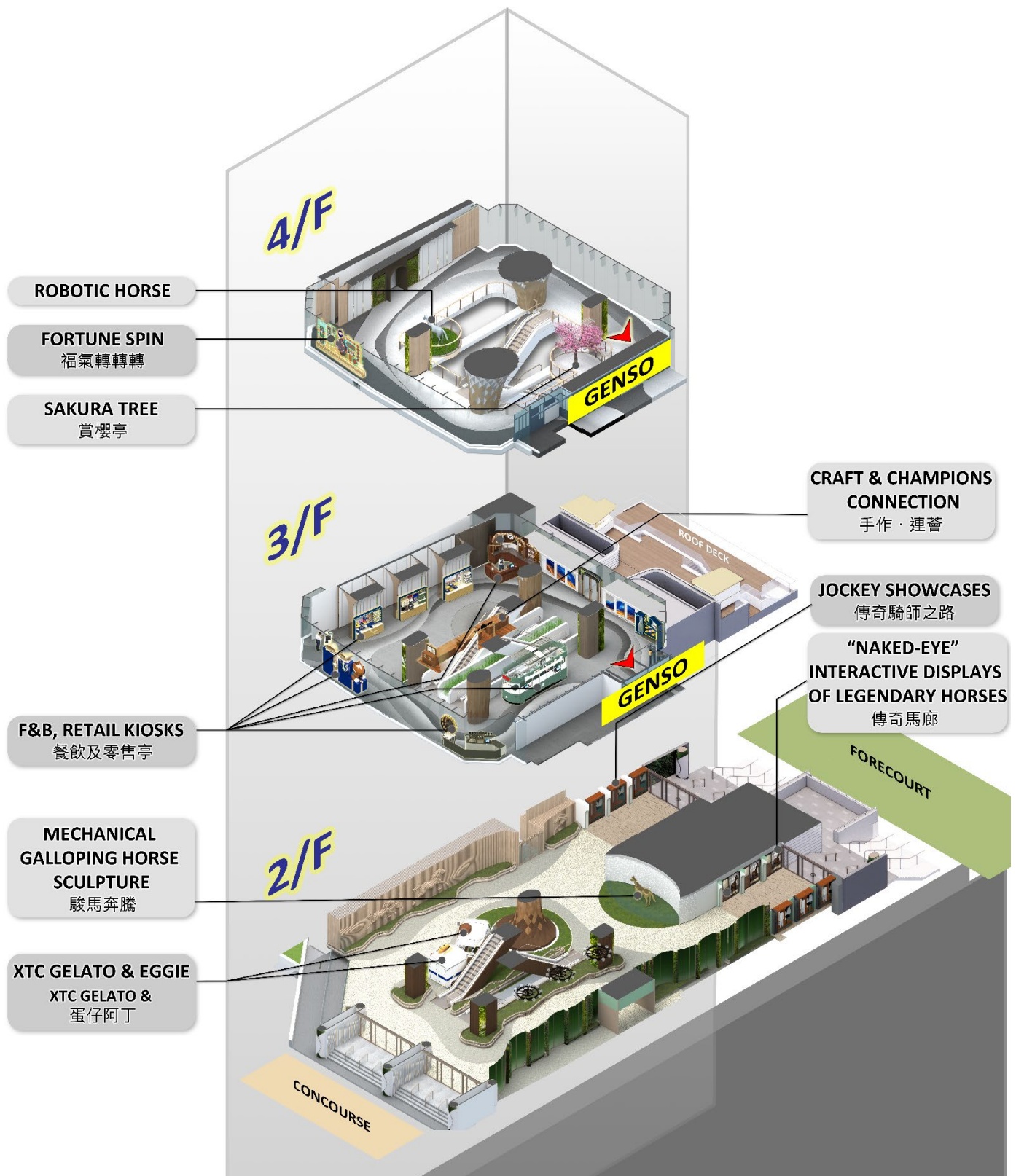


Fact Sheet – Champions Connection



Location	2/F to 4/F, Grandstand 2, Sha Tin Racecourse
Access	<p>The public and Members can reach Champions Connection via different accesses:</p> <ul style="list-style-type: none"> Public arrival point 1 - from MTR Racecourse Station: Customers can enter through the Racecourse Station and follow the three MTR footbridges to reach the Grandstand 2 Concourse, leading directly to the main entrance on the 2nd floor. Public arrival point 2 - from MTR Fo Tan Station and by bus: Customers can take the bridge of the Shatin Communications & Technology Centre (SCTC) to reach the Shatin Racecourse public entrance. Go by the Betting Hall and Digital Zone at Grandstand 2 to reach the side entrance on the 1st floor. Public arrival point 3 - by taxi: Customers can drop off at the Grandstand 2 Taxi Stands. From there, walk towards the Grandstand 2 entrance, and reach the main entrance on the 2nd floor by walking across the Grandstand 2 Concourse. Members arrival point - by private car: Members driving to the venue can park in the Grandstand 2 Car Park and take a brief walk to the main entrance on the 2nd floor.

2/F:

- “Naked-Eye” Interactive Displays of Legendary Horses and Jockey Showcases

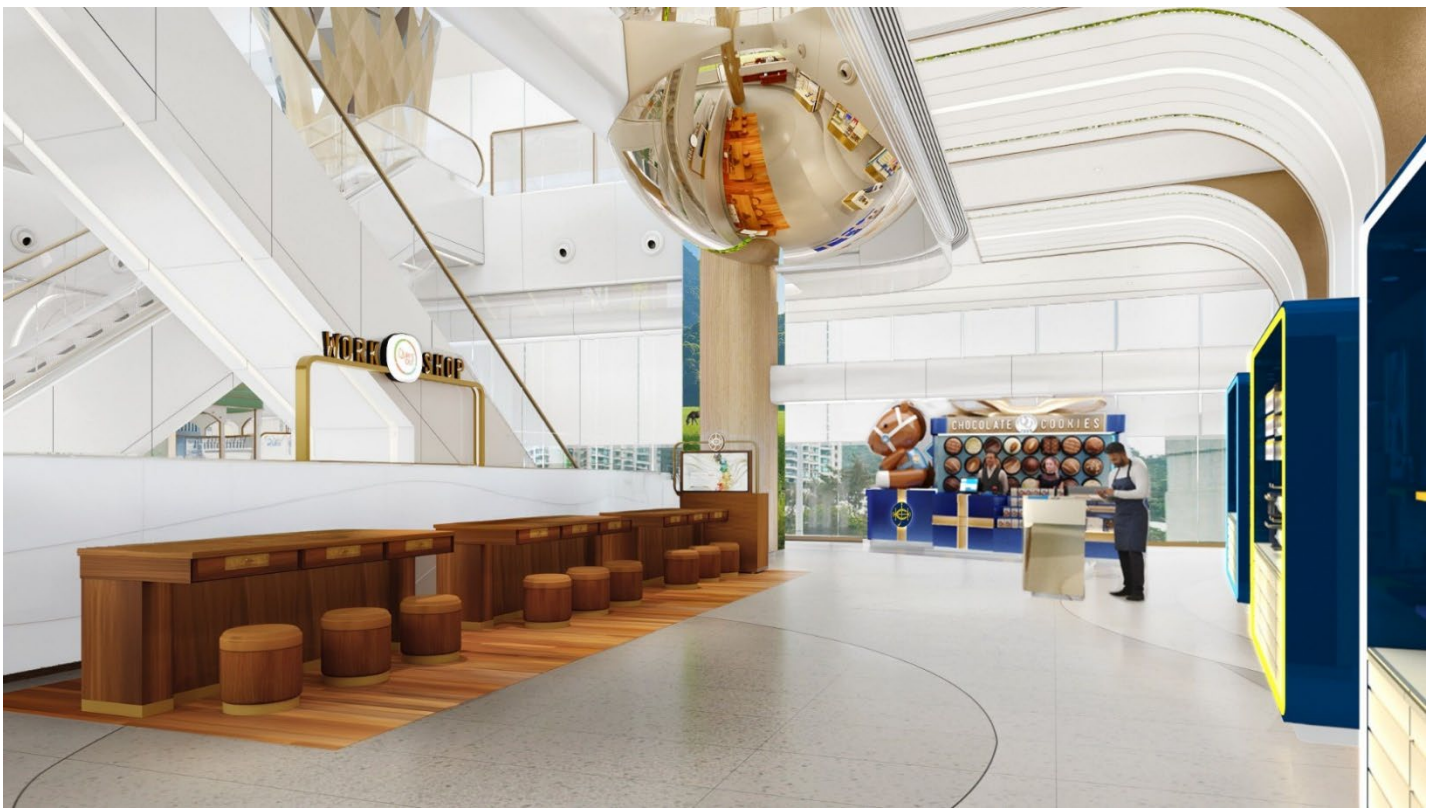


- Mechanical Galloping Horse Sculpture



3/F:

- Craft & Champions Connection, chocolate and cookies kiosk



- Retail and craft beer kiosks



4/F:

- Robotic Horse



- Fortune Spin



- Sakura Tree

