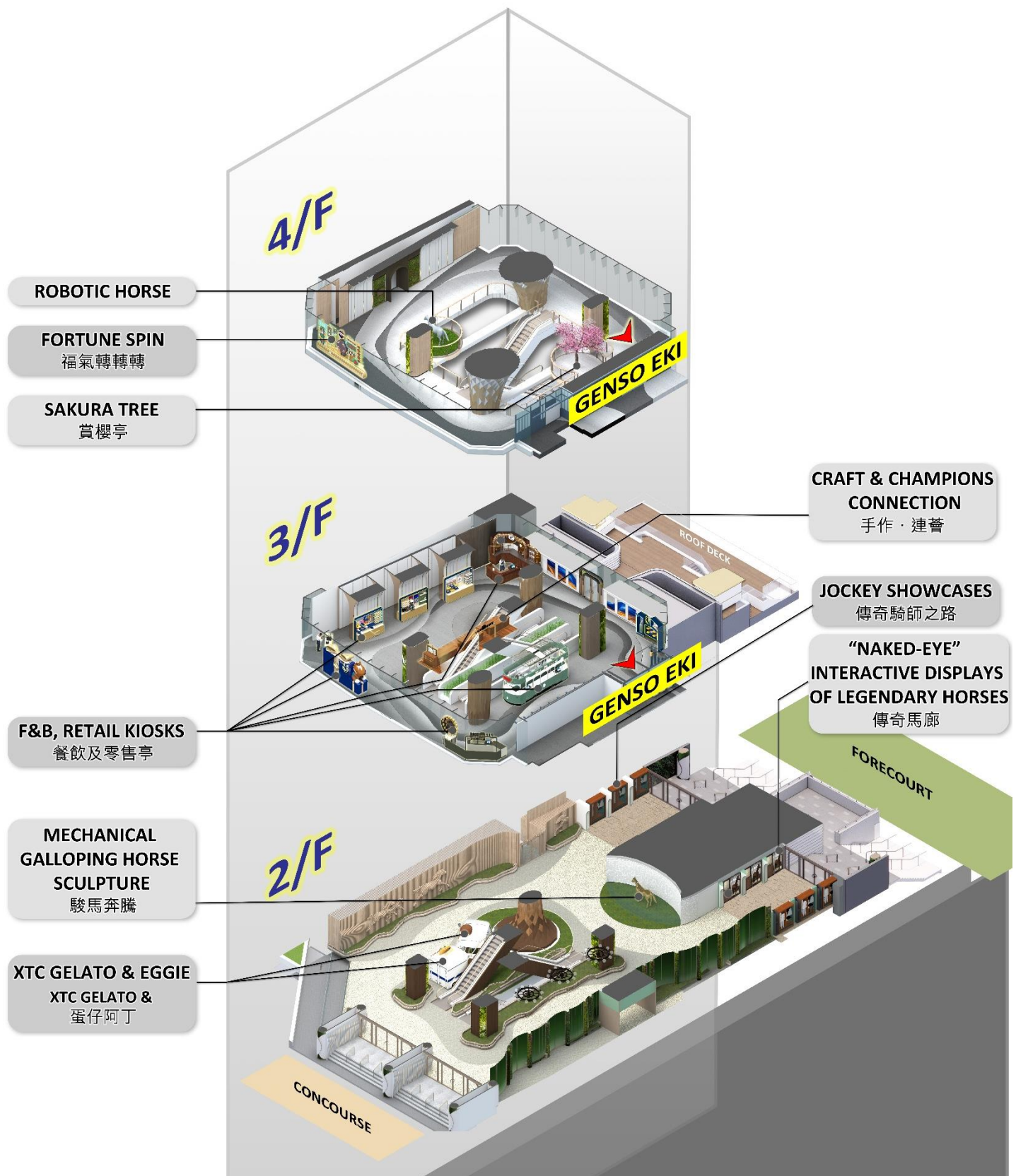


## Fact Sheet – Champions Connection



<b>Location</b>	2/F to 4/F, Grandstand 2, Sha Tin Racecourse
<b>Access</b>	<p>The public and Members can reach Champions Connection via different accesses:</p> <ul style="list-style-type: none"> <li> <b>Public arrival point 1 - from MTR Racecourse Station:</b>  Customers can enter through the Racecourse Station and follow the three MTR footbridges to reach the Grandstand 2 Concourse, leading directly to the main entrance on the 2<sup>nd</sup> floor. </li> <li> <b>Public arrival point 2 - from MTR Fo Tan Station and by bus:</b>  Customers can take the bridge of the Shatin Communications &amp; Technology Centre (SCTC) to reach the Shatin Racecourse public entrance. Go by the Betting Hall and Digital Zone at Grandstand 2 to reach the side entrance on the 1<sup>st</sup> floor. </li> <li> <b>Public arrival point 3 - by taxi:</b>  Customers can drop off at the Grandstand 2 Taxi Stands. From there, walk towards the Grandstand 2 entrance, and reach the main entrance on the 2<sup>nd</sup> floor by walking across the Grandstand 2 Concourse. </li> <li> <b>Members arrival point - by private car:</b>  Members driving to the venue can park in the Grandstand 2 Car Park and take a brief walk to the main entrance on the 2<sup>nd</sup> floor. </li> </ul>



2/F:

- “Naked-Eye” Interactive Displays of Legendary Horses and Jockey Showcases



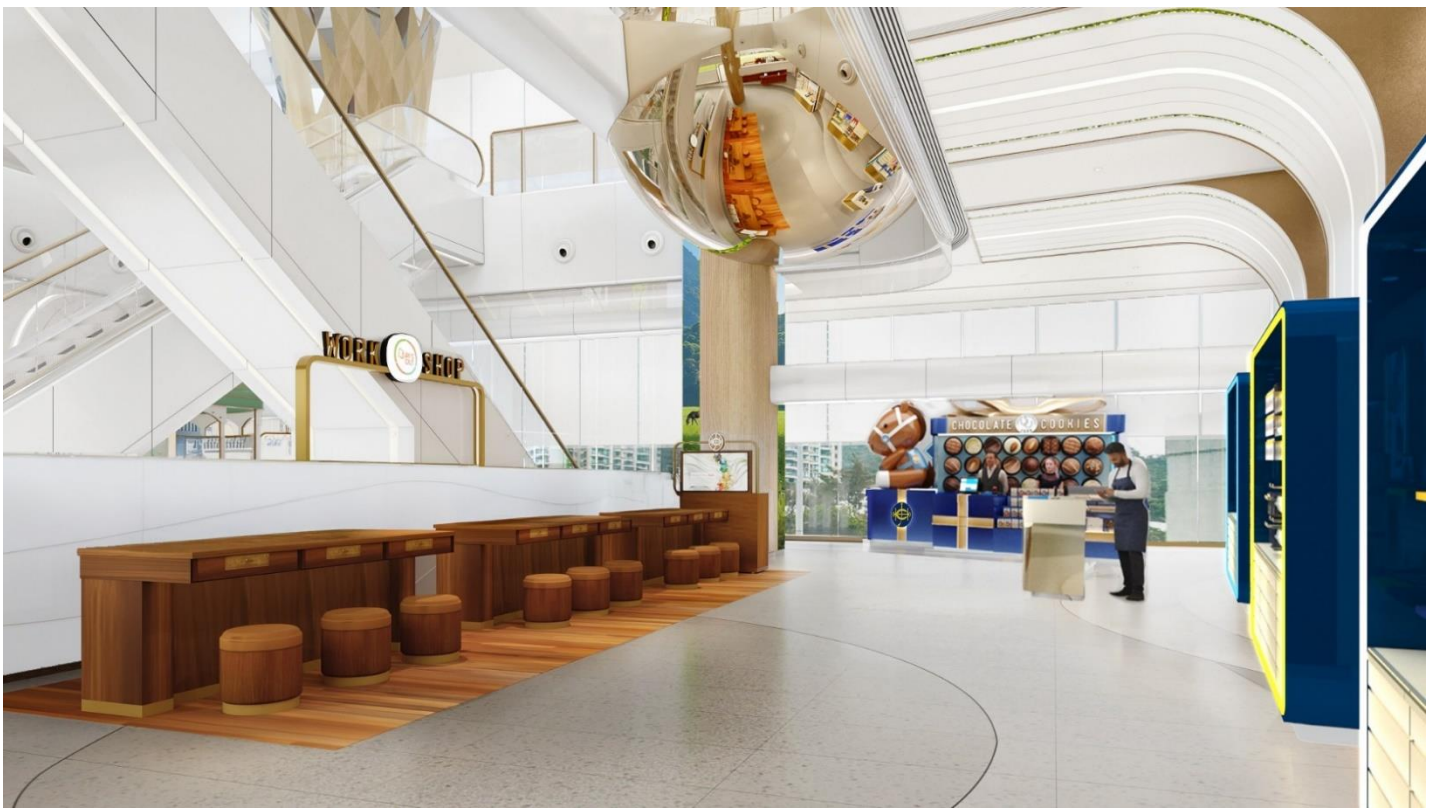
- Mechanical Galloping Horse Sculpture





3/F:

- Craft & Champions Connection, chocolate and cookies kiosk



- Retail and craft beer kiosks





4/F:

- Robotic Horse



- Fortune Spin



- Sakura Tree

